



Sunday 30th May 2021 – Jeredyne Stanley

PRESENTATION – NEW LIFE
CHURCH CRAWLEY

New
Life



Sussex
Community
Foundation

SET UP TO SUPPORT FAMILIES AT THE START OF THE COVID19 PANDEMIC

INTRODUCTION

DIRECTOR/FOUNDER OF RIVERS FOR WOMEN CIC (2009 TO PRESENT)

DIRECTOR/FOUNDER OF RIVERS LPC (2010 – PRESENT)

DIRECTOR/FOUNDER FOR OCEANS COMMUNITY PROJECT (2015 – PRESENT)

COMMUNITY ASSOCIATE – NEW LIFE CHURCH CRAWLEY (2020 -

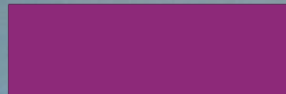


"CHRYsalis is a project that will never leave you the same. In this uncertain and changing climate with disappointments around us, this project has become a source of hope to see what tomorrow holds.

The project reflects the love of Christ through the leader. Empowers women to hold their heads high and appreciate their roles as mothers and defend their rights.

I, myself, am ever so grateful because there were many times when I did not know who or where to turn to for help. But CHRYsalis was ever present to put an everlasting smile on my face and my children.

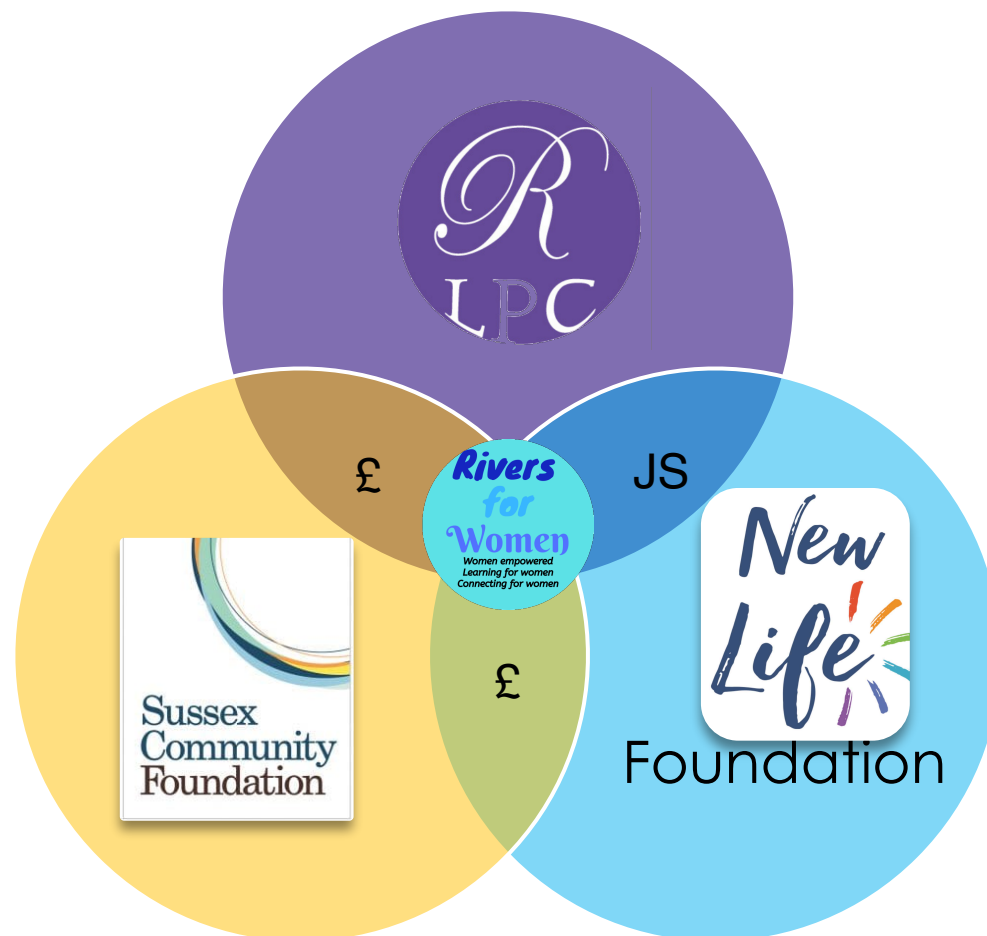
Thank you so much!



Supporting Vulnerable
Families During COVID19
Outbreak

Call 07539 995328
(Monday to Friday, 10am - 3pm)

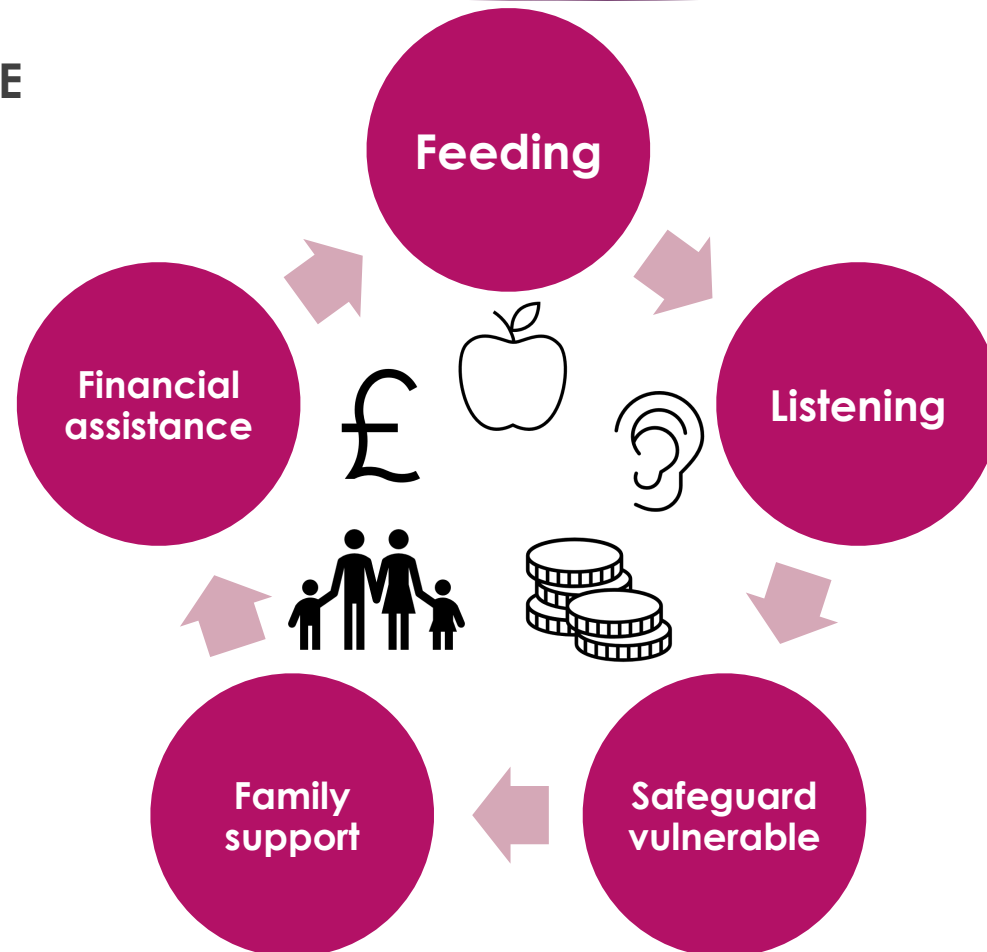
River CHRYSALIS



WHAT THE GOAL WAS:

TO SUPPORT THE VULNERABLE
CLIENTS OF RIVERS

OTHERS MEMBERS
OF THE COMMUNITY



WHAT ELSE?:

e.on

FreeShop
CRAWLEY WITH LOVE



utilita
life with power



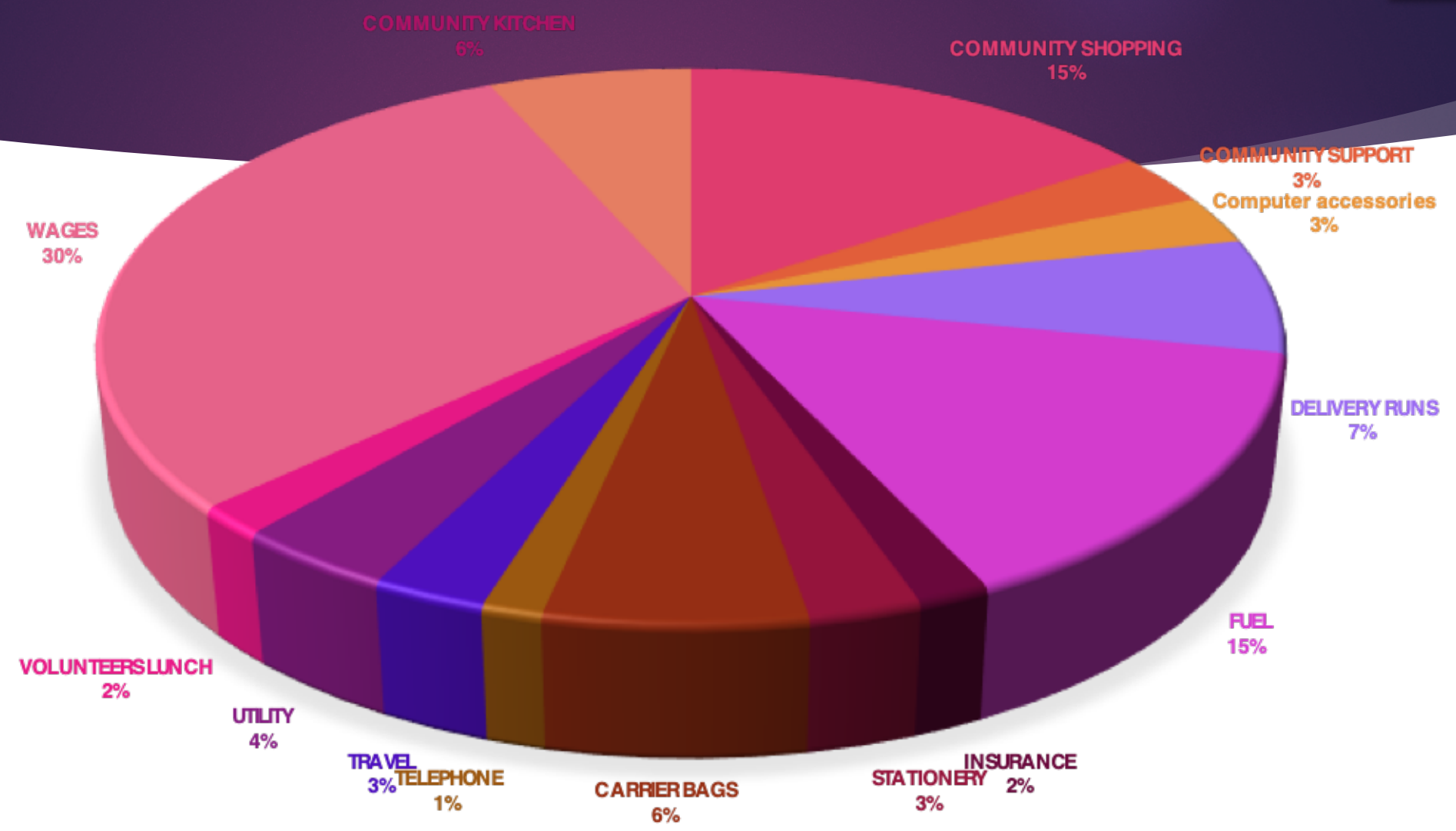
British Gas

GEOGRAPHICAL AREA

- ▶ CRAWLEY
- ▶ HORSHAM
- ▶ COWFOLD
- ▶ HORLEY
- ▶ BRIGHTON
- ▶ HOVE
- ▶ BIRMINGHAM – ONLINE
- ▶ LONDON - ONLINE



SPENDING - FIXED SHORT TERM



VOLUNTEERS - duties

☐ DRIVERS

- ☐ COLLECTION
- ☐ DELIVERY
- ☐ DISTRIBUTION

☐ SHOPPING

- ☐ VULNERABLE

☐ FOOD PROJECT SUPPORT

- ☐ PACKING FOOD PARCELS

☐ ADMINISTRATION

☐ REPORT WRITING

☐ COLLECTION/DELIVERY SERVICE

- ☐ FAMILY/CHILDREN SAFETY
EQUIPMENT

WHY WAS CHRYsalis' APPROACH DIFFERENT

- ▶ OTHER ORGANISATIONS WERE CLOSED
- ▶ MORE REQUESTS FOR HELP CAME TO CHRYsalis BY WORD OF MOUTH
- ▶ WHATSAPP, TEXT & TELEPHONE, CALL BACK, FACEBOOK, VIDEO CALLS
- ▶ FAMILY CENTRES WERE CLOSED
- ▶ FLEXIBLE
- ▶ DIVERSED
- ▶ WOMEN, MEN & CHILDREN
- ▶ AVAILABLE 24/7 - TELEPHONE
- ▶ ENGLISH NOT THE FIRST LANGUAGE
- ▶ PROJECT IS MOBILE & ACCESSIBLE TO THOSE WITH NO ACCESS TO TRAVEL

I am very grateful for the support I have been receiving from CHRYsalis during this hard time of the pandemic lockdown.

Thanks to Jeredyne who has taken time out over the past weeks to deliver some food bags and baby supplies for me."



Supporting Vulnerable
Families During COVID19
Outbreak

Call 07539 995328
(Monday to Friday, 10am - 3pm)

"I am a widow with limited means and CHRYsalis has really been such a blessing to me."



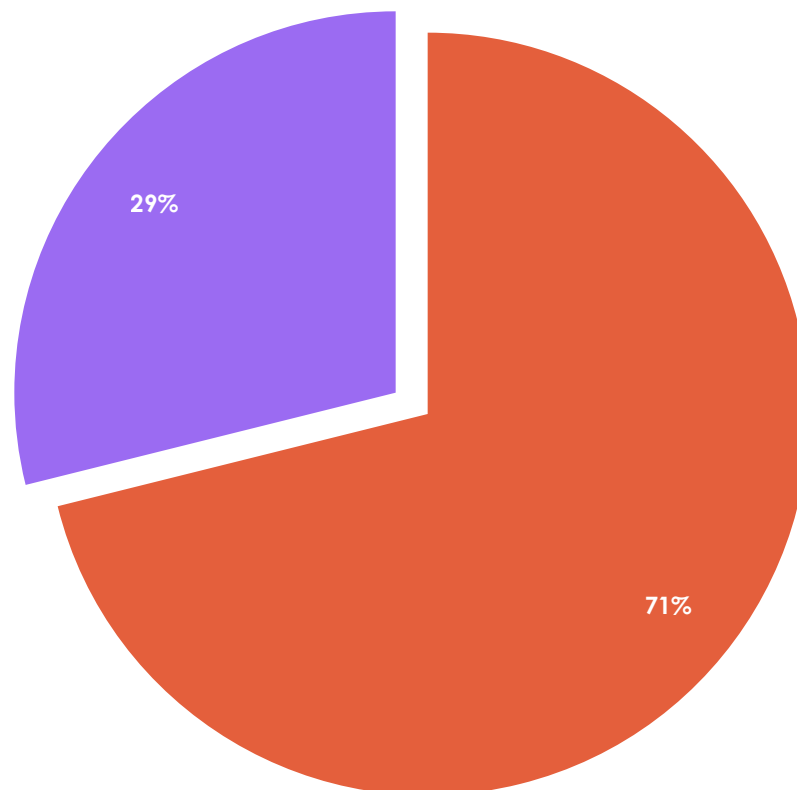
Supporting Vulnerable
Families During COVID19
Outbreak

Call 07539 995328
(Monday to Friday, 10am - 3pm)

FEEDBACK – WHAT DID OUR CLIENTS SAY?

VOLUNTEERS: RIVERS/New LIFE – 2020/21

● Rivers ● New Life

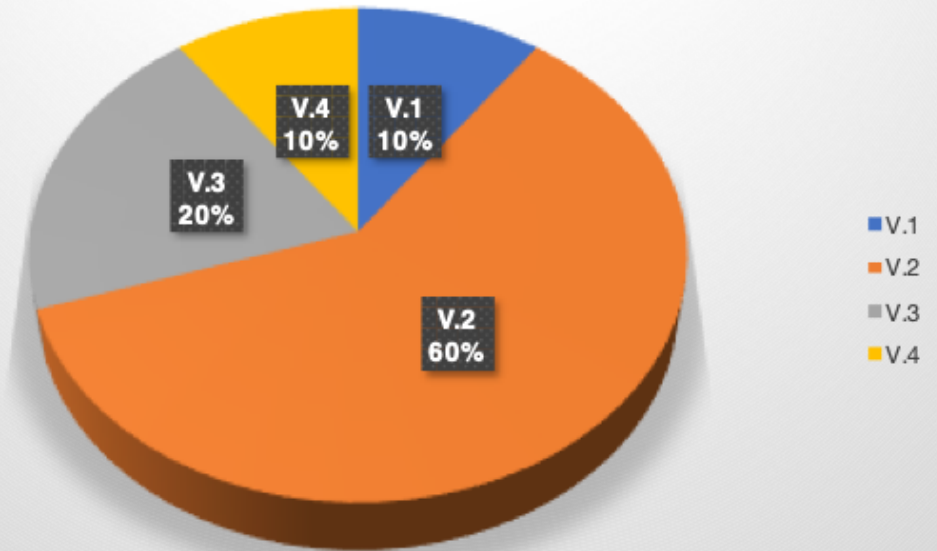


3,800 MILES – FEBRUARY TO MAY 2021



- 4 volunteers collecting
- 9 drivers delivering food parcels
- Collecting from other charities
- Delivering to homes
- 200 homes

FOOD COLLECTION FROM THE STORES



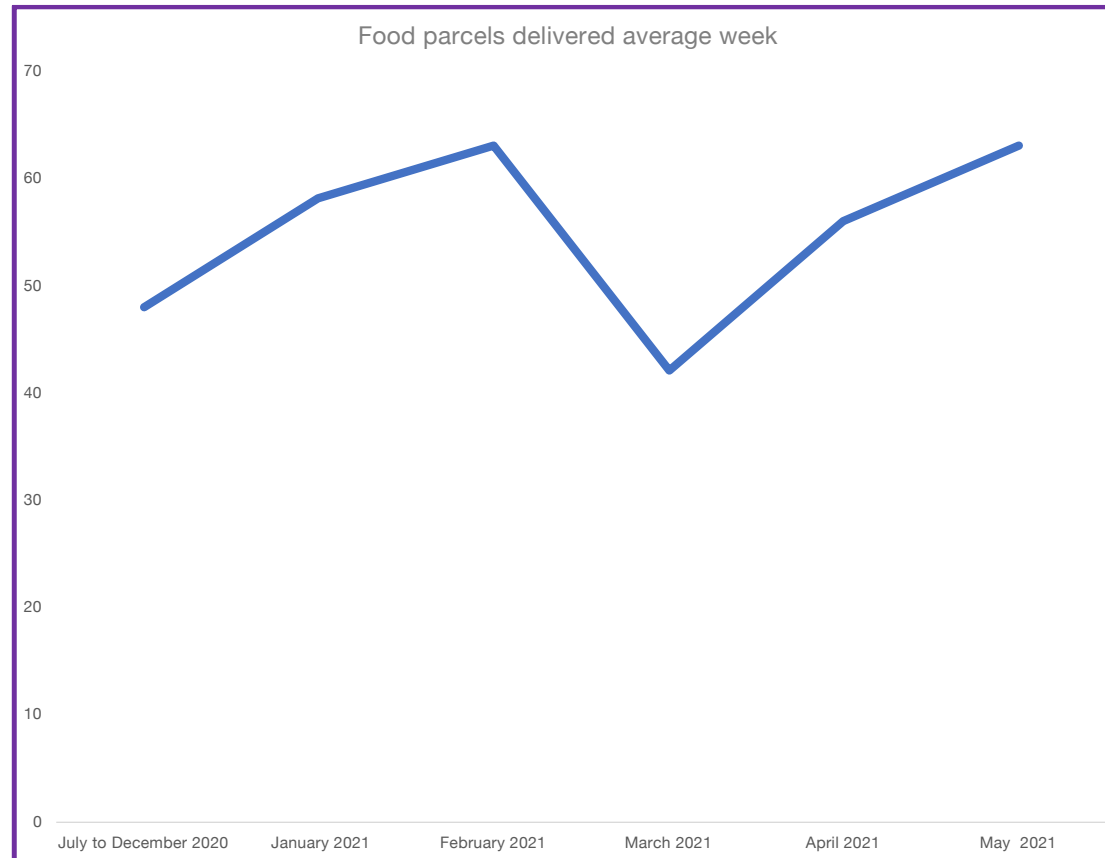
FOOD - PICTURE



FINAL – TODAY – CRAWLEY & BEYOND



Food parcels delivered to homes – average week



Testimonial



“I had the opportunity to volunteer at Rivers for two days this year. It has been such a pleasure learning about all the great work the charity does and get involved with the food project.

I think the most eye opening thing for me was realising how much difference a single day of volunteering can make. From calling in to help with delivery or helping pack food for the vulnerable one morning, there truly is no such thing as too little help – it all makes a huge difference.

Together we can build a better community, one day at a time.”

"The CHRYsalis project is helping my family not go to bed on a empty stomach. The support makes us feel that we are not alone and because of that we feel less stressed."



Supporting Vulnerable
Families During COVID19
Outbreak

Call 07539 995328
(Monday to Friday, 10am - 3pm)



WOMEN'S SPACE



Online



SAFETY, HEALTH, EMPOWERMENT

Learning for Women; Empowering for Women; Connections for women

WOMEN'S INTEGRATION



**Time for fun, relaxing activities, chat with other women
& making new friends.**

Where: Online - Zoom meeting

Wednesday mornings 10:30 to 12:00

**For more information send a text to: 07340 215678
or 07539 995328**

inspire

inspire

inspire



CHRYSALIS



(Supporting families during the COVID-19 crisis)

C . A . L . M .



**Daily topics
include loneliness,
stress reduction,
mental health,
diet, wellbeing,
self care, etc.,**

Combat Anxiety & Loneliness Meeting

**Join CHRYSALIS on Zoom every day for some wellness
chat**

1PM & 6PM

23rd December - 4th January

**Text 07539 995328 for joining instructions or ask
the person who sent this to you.**



List Of Things Activities RIVERS Has Done So Far

- Adult Clothes
- ASDA Shopping Vouchers
- Baby Clothes/Cots/Safety support accessories
- Back to School Support (Education Support)
- C.A.L.M Session
- Christmas Hampers
- Community Shopping
- Distribution of Toys
- Door-Step Support
- Emergency Family Hampers
- Emotional Support
- Ethnic Minority Support Meetings
- Female Hygiene Hampers
- Female Self Pampering Hampers
- Food Parcels
- Gas & Electricity Top Up
- Job Search (Help with CV and how to attend interviews)
- Male Hygiene Bags
- Nappy Packages & Baby Food
- Red Cross Hardship Fund
- S.H.E. Monday Morning ZOOM Meetings
- School Uniform Schemes
- Volunteers Incentive Scheme (IT & Travel)

Where Rivers is now



WE ARE STILL HERE

SUPPORTING WOMEN & THEIR FAMILIES

Rivers Learning Project Community, is a local reputable and independent charity in the Crawley, West Sussex area.

The main goal of our charity is to actively work towards breaking the barriers women face in the community while seeking help.

We **continue to provide support to those in need** (food parcels, hygiene packs, and online peer support) during the lockdown and/or national restrictions.

Please call or text **0753 999 5328** or **0734 021 5678** and find out how we may be able to help you.



RIVERS RESOURCE SPACE FOR WOMEN

W: www.rivers-space.org.uk T: 07539 995 328 E: contact@riverslpc.org.uk

At RIVERS SPACE our role is to act as a facilitator and organiser of resources, which benefit women who need support or guidance.

S - SAFETY AND SECURITY

P - PLAN FOR PROACTIVITY

A - ACHIEVE AMBITIONS

C - CONSOLIDATE CONFIDENCE

E - ENJOY ENGAGEMENTS

P R E S E N C E



SPACE connects women with already established local public services, support services, charities and commercial organisations, and acts as a point of contact for women from different sections of the community.

Do You Need Support, Help or Guidance?

Whatever your needs, you can contact us by phone, e-mail, or for face-to-face video meetings, you can find us at **PRESENCE Women's Resource Centre**.

Centre Temporary Address:

The Ark Community Hub, The Glade, Crawley, RH10 6JL (New Life Church Crawley)

Centre Contact Numbers: 07340 215678 or 07539 995328

FINAL - TODAY

"This is an inspiring selfless deed, which not only affects the lives of individuals and families but demonstrates the pure meaning of love and care."

- JQ



Supporting Vulnerable
Families During COVID19
Outbreak

Call 07539 995328
(Monday to Friday, 10am - 3pm)

*"Glad to be a volunteer for the
CHRYsalis Project."*

*I am proud to also say that I have
personally benefit from the
project as well."*

- Becky



Supporting Vulnerable
Families During COVID19
Outbreak

Call 07539 995328
(Monday to Friday, 10am - 3pm)

FINAL - TODAY

"Glad to be a volunteer for the
CHRYSLIS Project.

I am proud to also say that I have
personally benefit from the
project as well."

- Becky



Supporting Vulnerable
Families During COVID19
Outbreak

Call 07539 995328
(Monday to Friday, 10am - 3pm)

"This is an inspiring selfless deed, which not only affects the lives of individuals and families but demonstrates the pure meaning of love and care."



Supporting Vulnerable
Families During COVID19
Outbreak

Call 07539 995328
(Monday to Friday, 10am - 3pm)

“

Thanks

”

CONTACT: 07539 995328

EMAIL: CONTACT@RIVERSLPC.ORG.UK